

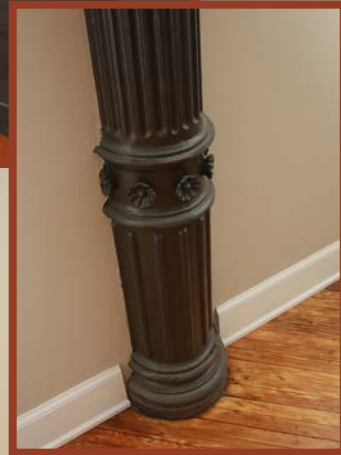
THE AUTOMAT

NEW 1 & 2 Bedroom
Luxury Apartments

818 Chestnut / 815 Sansom



NOW RENTING

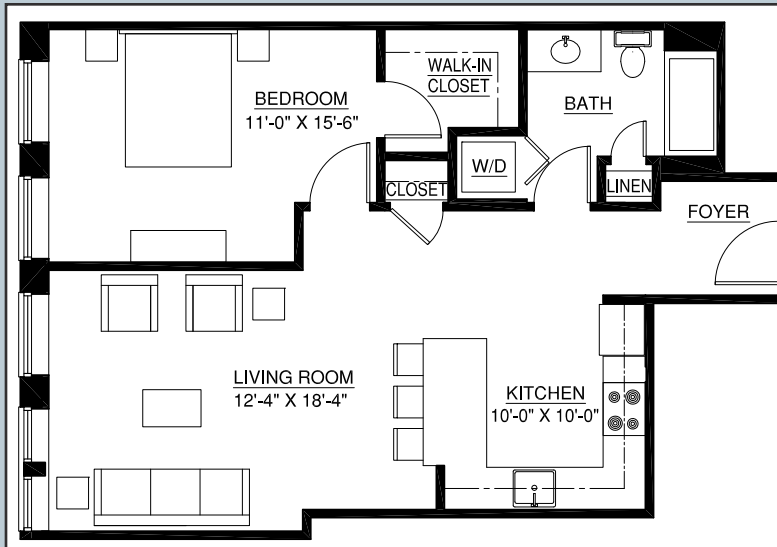


BUILDING HISTORY



Hungry? Drop a nickel in a slot, open the door to your chosen compartment, and pull your dish right out - a modern miracle! A coin-operated glass-and-chrome wonder, Horn & Hardart's Automats revolutionized the way Americans ate when they opened up in Philadelphia in 1902. The Automat served freshly made food for the price of a few coins, and no one made a better cup of coffee. The Automat was more than an inexpensive place to buy a good meal; it was a culinary treasure, a technical marvel, and an emblem of the times. The Automat was a true American treasure, and the restoration of this building is its tribute.

APARTMENT FEATURES



NOTE:
 1. TYPICAL UNIT FOR MARKETING PURPOSES ONLY.
 2. ALL DIMENSIONS ARE APPROXIMATE.

- New Construction with Luxury Finishes
- Spacious 1 and 2 Bedroom Apartments
- Expansive Ceiling Heights with Oversized Windows
- Washer/Dryer in each Apartment
- Individual Security Systems
- Kitchens with Designer Polished Concrete Countertops, Stainless Steel Appliances, Dishwashers, 42" Cabinets, and Gas Cooking
- Energy Efficient: High Efficiency Heating and Cooling with Individual Controls, Low E-Windows, and Certified Insulation
- Generous Walk-in Closets
- Beautiful Wide Plank Maple Hardwood Flooring
- Internet, Cable and Telephone Ready

LOCATION

- Located in the Heart of Center City at 815 Sansom Street
- On Historic Jeweler's Row in Washington Square West
- Convenient to Washington Square, Local Hospitals, Campuses, World Class Dining, Public Transportation, Shopping, and Nightlife
- Parking Lot Conveniently Located Across the Street for a Discounted Rate

AMENITIES

- The Automat is a Newly Renovated Historic Building Featuring Contemporary Living while Maintaining Rich Historic Characteristics such as Exposed Brick and Columns
- Self Storage Units May Be Available on Site*
- Building Secured by Security Alarm Systems in each Apartment, 24 Hour Video Surveillance, and Cellular Telephone Entry System
- Elevator Service